



manufacturers of the finest small elevators since 1986

ELEVATOR CONCEPTS LTD

18720 krause
734-246-4700

riverview, mi 48192
fax 734-246-2547

MOTOR HOOKUP

Elevator Concepts LTD supplies a variety of motors, designed to match both the elevator characteristics and the building power supply. These motors use industry standard winding designations. The 9 diagrams that follow cover the vast majority of motors supplied by us.

When connecting a motor :

- Verify the incoming power supply with a meter
- Check the motor nameplate for the full load amps
- Make sure the branch circuit conductors and overcurrent device are sized for the full load amps
- Make sure all connections are clean and tight

When starting a motor for the first time:

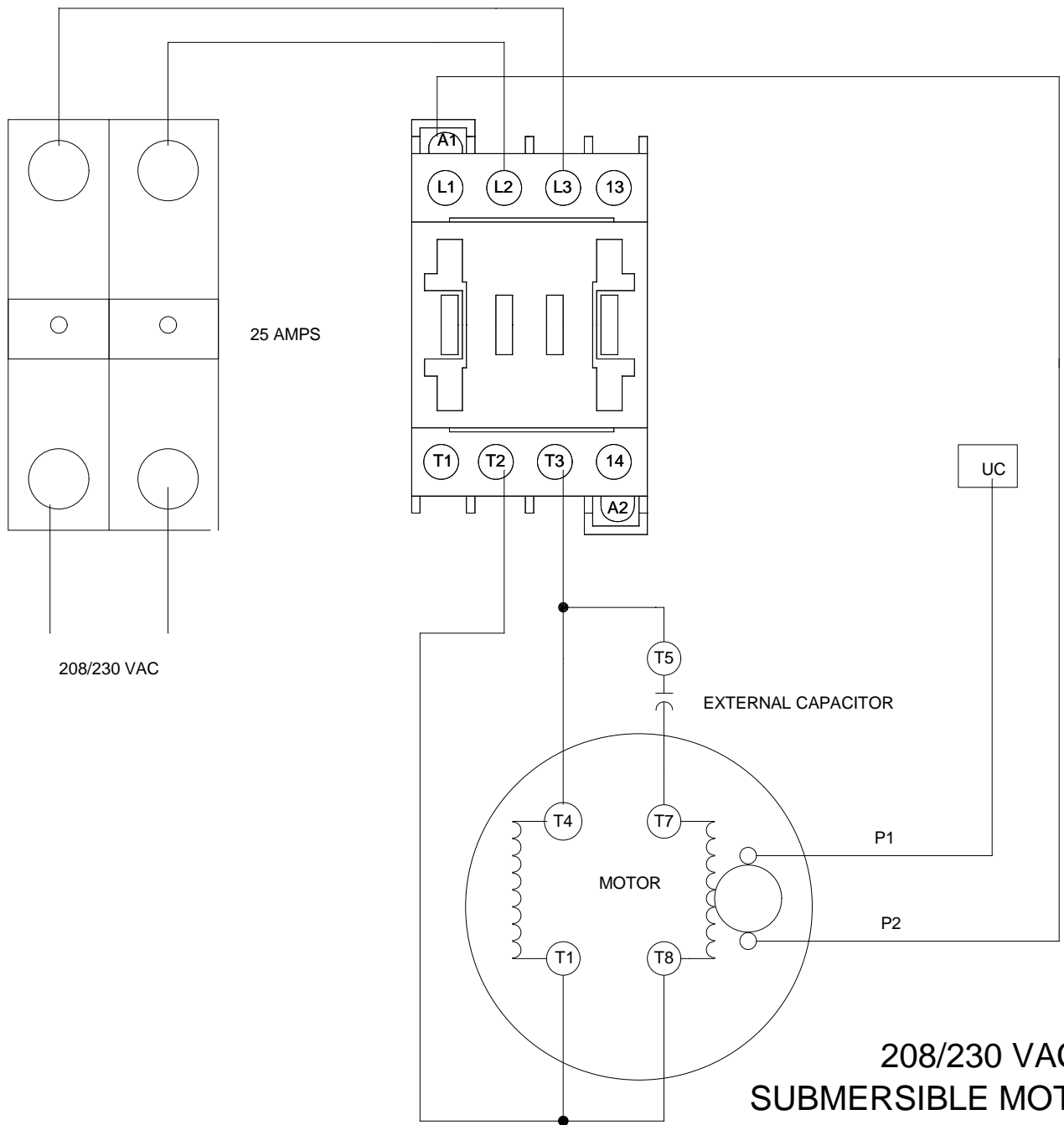
- If incorrect rotation will cause damage, verify rotation before connecting motor to load
- Make sure that all keys, couplings, brakes, and other attachments are secure
- Momentarily start motor to check rotation
- If rotation is incorrect, reverse leads per the nameplate or wiring diagram instructions.
- Run motor and check current draw with a clamp-on ammeter. If current is excessive, investigate cause and correct it.

If the motor makes unusual noise, or runs hot, check the following:

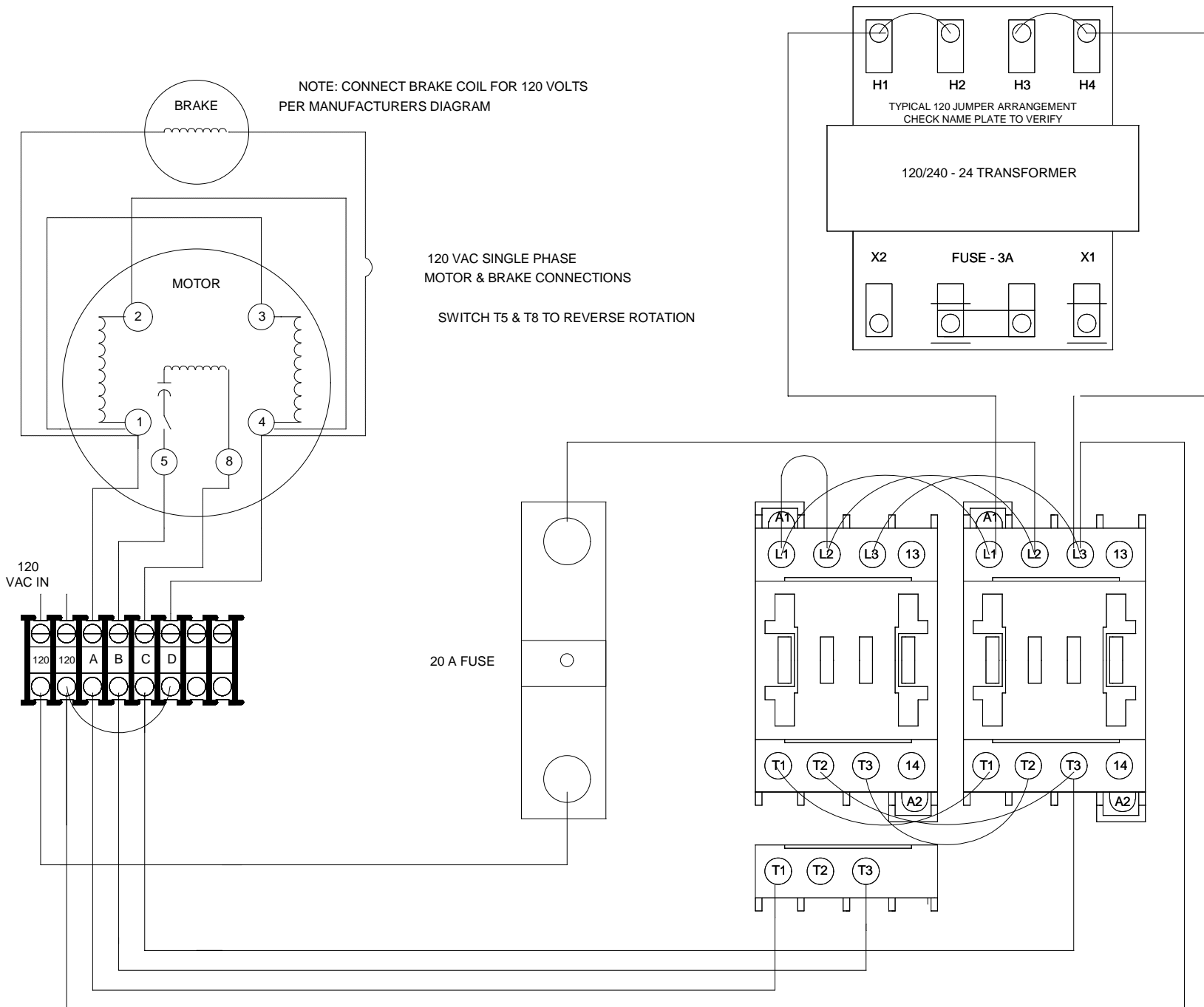
- Incorrect power
- Loss of 1 phase - broken wire, bad connection, bad starter contact, blown fuse, overload heater, etc.
- Physical overload
- Brake (if equipped) not picking or adjusted properly

For further troubleshooting hints, see the service bulletins on Motor power and Motor fuses.

If you have any questions about motor hook-up, please contact the factory at 734-246-4700

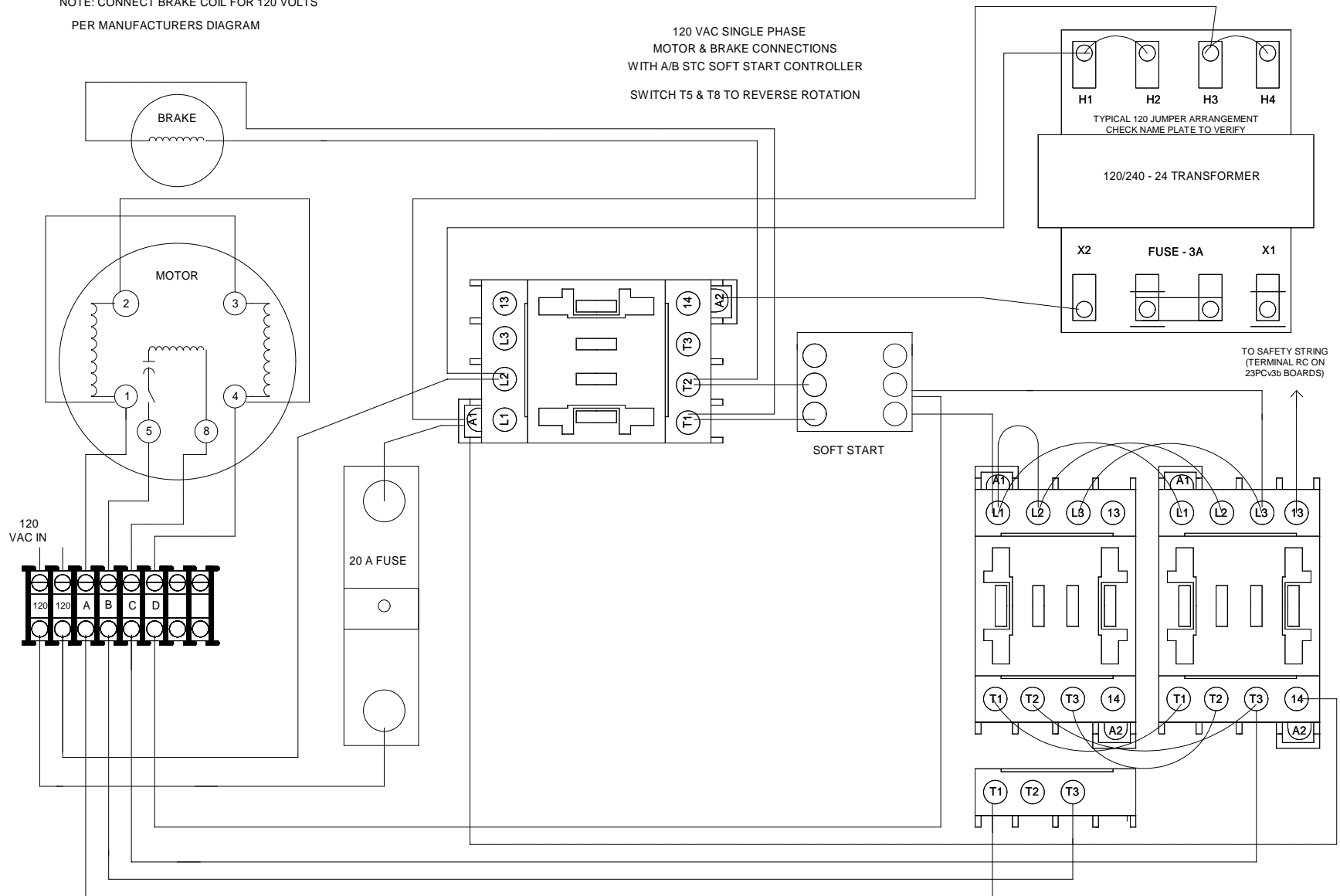


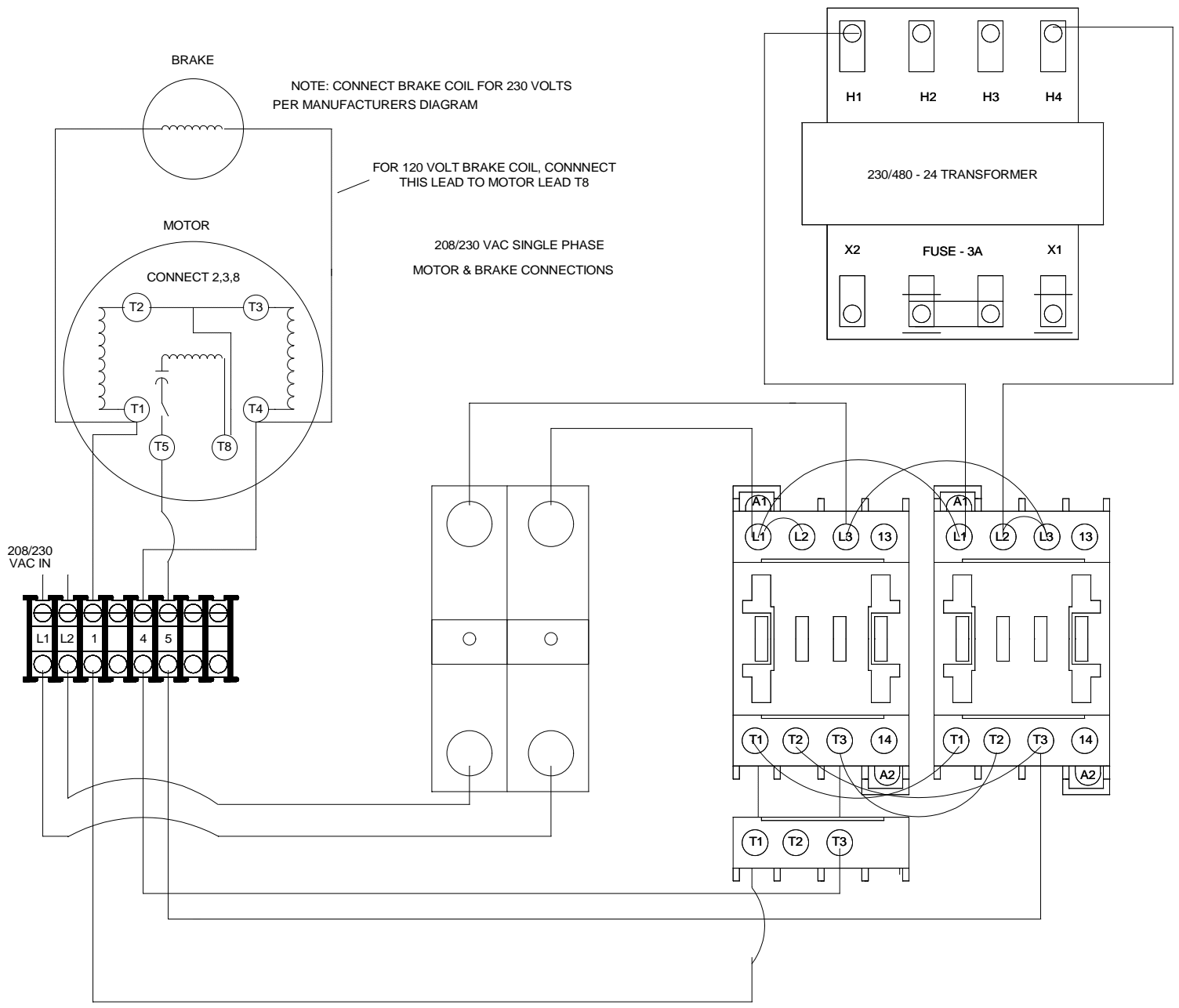
208/230 VAC SINGLE PHASE
SUBMERSIBLE MOTOR CONNECTIONS

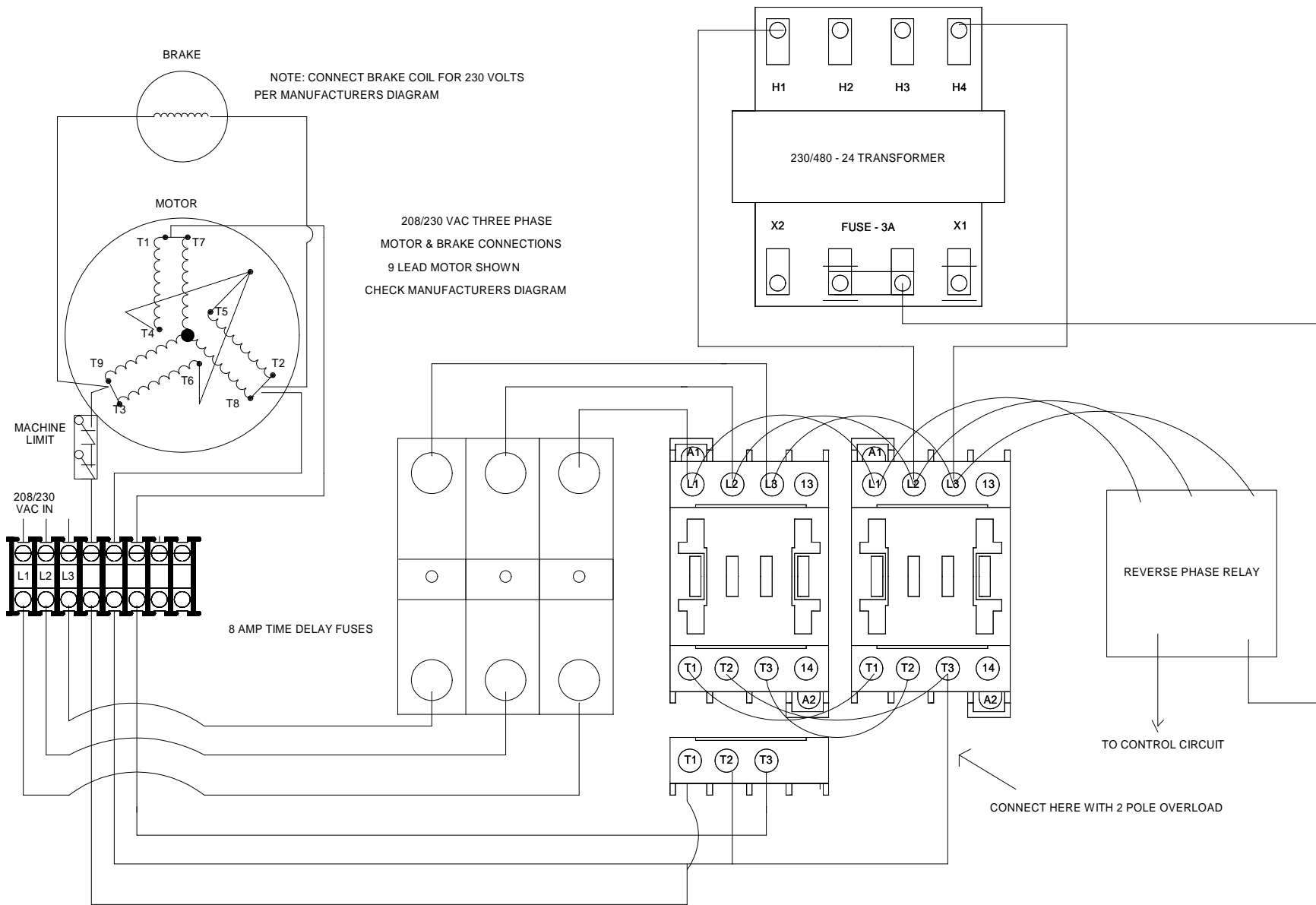


NOTE: CONNECT BRAKE COIL FOR 120 VOLTS
PER MANUFACTURERS DIAGRAM

120 VAC SINGLE PHASE
MOTOR & BRAKE CONNECTIONS
WITH A/B STC SOFT START CONTROLLER
SWITCH T5 & T8 TO REVERSE ROTATION







BRAKE

NOTE: CONNECT BRAKE COIL FOR 230 VOLTS PER MANUFACTURERS DIAGRAM

MOTOR

208/230 VAC THREE PHASE MOTOR & BRAKE CONNECTIONS
9 LEAD MOTOR SHOWN
CHECK MANUFACTURERS DIAGRAM

H1

H2

H3

H4

230/480 - 24 TRANSFORMER

X2

FUSE - 3A

X1

MACHINE LIMIT

208/230 VAC IN

L1 L2 L3

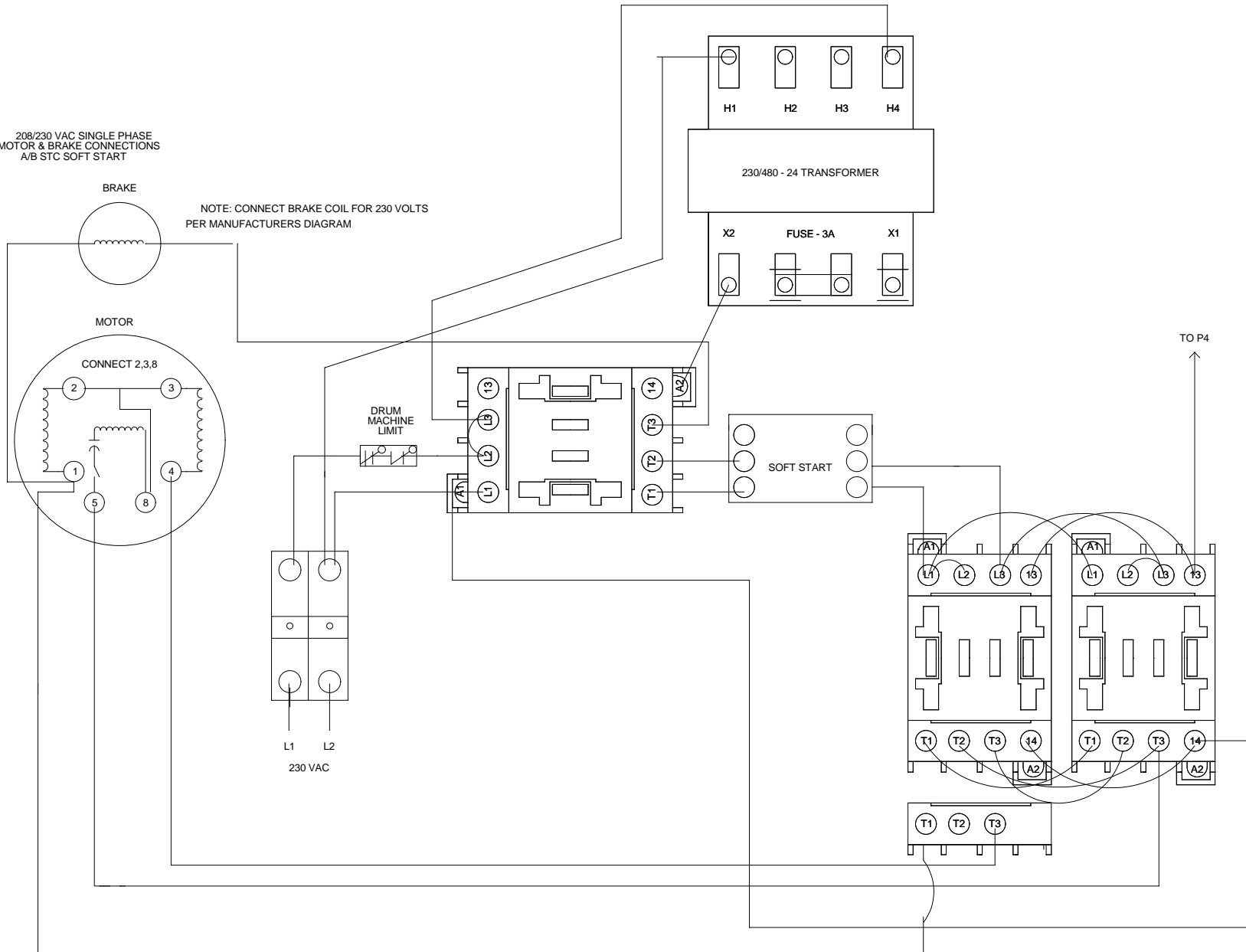
8 AMP TIME DELAY FUSES

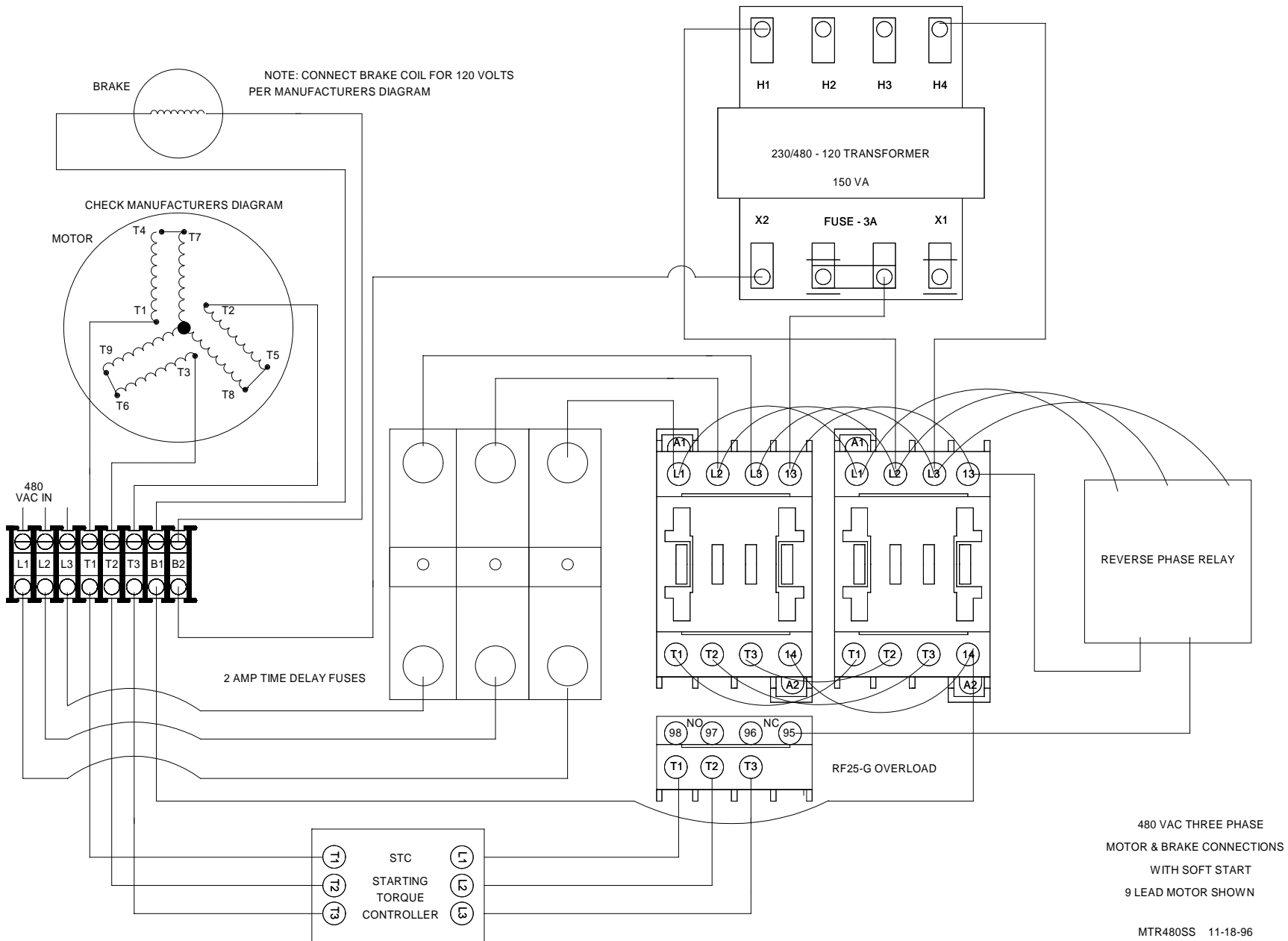
REVERSE PHASE RELAY

TO CONTROL CIRCUIT

CONNECT HERE WITH 2 POLE OVERLOAD

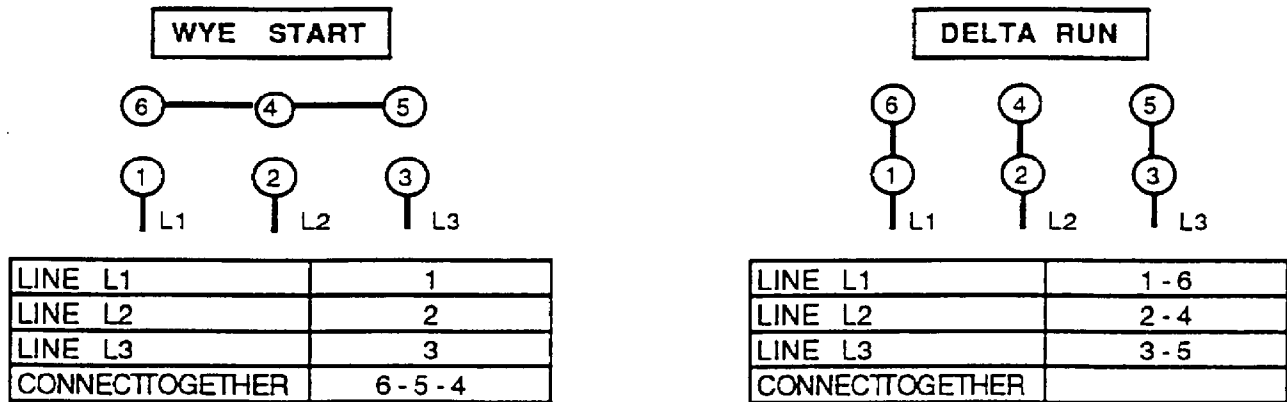
208/230 VAC SINGLE PHASE
MOTOR & BRAKE CONNECTIONS
A/B STC SOFT START



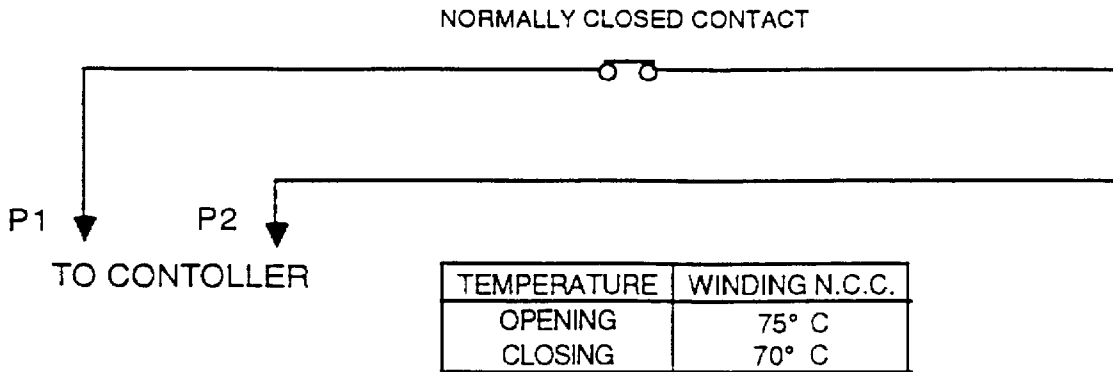


Submersible Pump Motors

CONNECTION DIAGRAM 6-LEAD



CONNECTION DIAGRAM - THERMAL PROTECTION



P1 - P2 Contact rating : 2.5 Amps at 250 v (A.C. only)

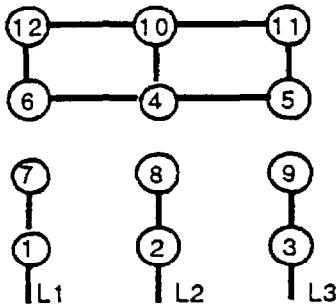
SPEC.: SB0105A DATE: JAN. 93	MANUFACTURED BY:
---------------------------------	----------------------

Submersible Pump Motors

CONNECTION DIAGRAM 12-LEAD

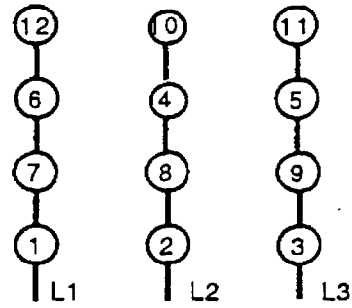
A - LOW VOLTAGE

WYE START, LOW VOLTAGE



LINE L1	1 - 7
LINE L2	2 - 8
LINE L3	3 - 9
CONNECT TOGETHER	6 - 4 - 5 - 12 - 10 - 11

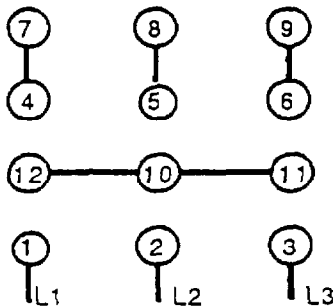
DELTA RUN, LOW VOLTAGE



LINE L1	1 - 6 - 7 - 12
LINE L2	2 - 4 - 8 - 10
LINE L3	3 - 5 - 9 - 11
CONNECT TOGETHER	-

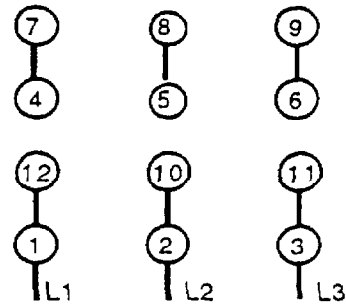
B - HIGH VOLTAGE

WYE START, HIGH VOLTAGE



LINE L1	1
LINE L2	2
LINE L3	3
CONNECT TOGETHER	10 - 11 - 12
	4 - 7
	5 - 8
	6 - 9

DELTA RUN, HIGH VOLTAGE



LINE L1	1 - 12
LINE L2	2 - 10
LINE L3	3 - 11
CONNECT TOGETHER	4 - 7
	5 - 8
	6 - 9

SPEC.: SB0105
DATE: JAN. 93

MANUFACTURED BY:

